

# Elk County 4-H News

**December 2024**

Rolling Prairie Extension District - Howard Office  
130 South Pennsylvania  
P.O. Box 647  
Howard, KS 67349  
620-374-2174 (Phone)  
620-374-2889 (Fax)

**K-STATE**  
Research and Extension



## 4-H Calendar of Events

### December

8 4-H Council Meeting -- 2:00 p.m.  
8 4-H Officers Training and Christmas Party -- 3:00 p.m.  
13 Registration Due for 4-H Day with K-State Women's Basketball Game  
24 - 31 Holidays -- Offices Closed

### January

1 Holiday -- Offices Closed  
4 4-H Day with K-State Women's Basketball Game  
5 Livestock Judging/Skillathon Practice -- 4:30 p.m.  
17 Southeast Area 4-H Project Record Screening  
19 Livestock Judging/Skillathon Practice -- 4:30 p.m.  
20 Holiday -- Offices Closed

### February

2 Livestock Judging/Skillathon Practice -- 4:30 p.m.  
5 4-H Council  
16 Market Beef and Breeding Heifer Weigh In and Tag Day (150 Days)  
16 Livestock Judging/Skillathon Practice  
16 - 17 Citizenship in Action -- Topeka  
22 - 23 Horse Panorama -- Rock Springs

### March

1 KSU Jr Swine Producers Day  
22 KSU Jr Meat Goat Producers Day  
22 Regional 4-H Club Day -- Madison

### April

2 4-H Council Meeting -- 6:30 p.m.  
18 - 19 Small Animal Weigh In and Tag Day



## 4HOnline Enrollment

If you want to participate in the 2025 Elk County 4-H Fair, you must be enrolled by December 1, so get enrolled now!!

**Elk County 4-H Fair**  
**July 16 - 19, 2025**  
**Howard**

This year, funds are available to pay for member's enrollment fees. When members enroll, **you will mark your payment as a check payment.** Once enrollment is completed; it is sent to the Extension Office for approval. We will enter a code and your fees will be paid. If you have any questions about this, please ask before you enroll!

~~~~~

## 4-H Council Meeting

4-H Council will meet **Sunday, December 8, 2:00 p.m. at West Elk School prior to the County Officers Training and Christmas Party.**

The agenda items include:

- 🌿 Steak Supper and/or Fundraisers
  - 🌿 4-H Club Day
  - 🌿 Record Books and Excellence Awards
  - 🌿 County Fair Items and Awards
  - 🌿 Other New Business
- ~~~~~

## 4-H Officers Training and Christmas Party

Mark your calendars for **Sunday, December 8, 3:00 p.m. for County Officers Training, Meeting Exchange and County Christmas Party.** Event will be at West Elk School

This will be a fun event for the whole county to come together for a Christmas Party with a gift exchange, games, and officers training.

We will do a form of officers training with all clubs having a joint meeting. All Presidents, Vice

Presidents and Secretary's will sit at the front of the room. We will do part of a regular meeting together for all three clubs; including Call to Order, Flag Salute/4-H Pledge, Roll Call, Communications, Reports Officers, Leaders Reports, and Committee Reports. When it is time for New Business, each club will break into their own meeting and do their business and read and approve the minutes from their previous meeting.

Each member is to bring a \$5.00 white elephant gift for the gift exchange, and a finger food for sharing. Members are also to bring an item for the Community Empower Drive. Each club's membership is to bring the following items.

Flint Hill Boosters - Shampoo, body washes, socks for all ages.

Grenola Jayhawkers - Femine pads, bibles, journals, pens.

Moline Shining Star - Diaper wipes, diapers, diaper cream, coloring books, crayons.

After the club meetings and before the gift exchange, I want to meet with the Teen Leaders for a few minutes.

~~~~~

**Record books and Officer Notebooks can be picked up at the Extension Office at your earliest convenience.**

## Livestock Judging and Skillathon Practices

Those of you that are interested in livestock judging and livestock skillathon are invited to attend practices on the first and third Sundays of the month, starting January 5, 4:30 p.m. at the Extension Meeting Room. The group that met on November 17, decided to try and meet on the first and third Sundays, at least initially, to see how things go. First practice will be Sunday, January 5, 4:30 p.m. at the Extension Meeting Room.

~~~~~

# Southeast Regional Project Award Screening

The Project Report Forms are used to select area and state project winners. To be eligible for area judging, members must be named county champion in the project area, and must have passed their 14<sup>th</sup> birthday before January 1, 2025.

Each 4-H'er must submit a separate project award for each program they are eligible. The following items must be turned in for a complete Regional Project Award submission:

1. Check Sheet
2. Personal Information Page
3. Project Report Form
4. Cover Letter
5. Resume

Do not include:

- 4-H Permanent Record
- Dividers
- Plastic Cover Sheets

Screening for the Southeast Area is January 17. Completed project award submissions are due in the Extension Office by January 10. Members and the projects that are eligible to submit Project Award documents are:

- Isabella Apsley -- Sheep
- Emma Arbuckle -- Horse, Communications
- Nethra Fry -- Visual Arts
- Peyton Fechter -- Photography, Meat Goats, Leadership, Foods & Nutrition, Beef
- Rachel Humphrey -- Shopping in Style, Sewing & Textiles Design
- Elizabeth Woods -- Swine

## Market Livestock Weight Requirements for 2025

For members and families interested in enrolling in market livestock projects, the weight requirements are the same as they were last year and there will be

no rate of gain requirements for all species to be eligible for the premium sale.

| Species     | Weight               |
|-------------|----------------------|
| Market Beef | minimum of 1050 lbs. |
| Market Hog  | minimum of 220 lbs.  |
| Market Lamb | minimum of 100 lbs.  |
| Market Goat | minimum of 60 lbs.   |

## Livestock Tagging

If you wish to exhibit an animal of any species at the 2025 Elk County 4-H Fair, it must be tagged and/or ownership verified by registration papers, including dairy and bucket calf. All breeding animals must have ownership as of the date of that species weigh in/tag day. Commercial livestock needs to be tagged with a 4-H tag and registered purebred livestock must have registration papers in the exhibitor's name. Breeding animals that were tagged in previous years and are eligible for the 2025 county fair, do not need to be retagged so long as the previous year's tag is still in its ear.



Breeding beef heifers must be tagged at the weigh in and tag day on February 16 or have registration papers by that date. Breeding meat goats, sheep and swine must be tagged on April 18 or 19 or have registration papers by this date.

Dairy cattle/goats and bucket calves need to be tagged and recorded with the Extension Office by May 1 of the current year.

## Set Personal Goals in Your Record Book

Goal setting and planning should be a part of everyone's 4-H experience. If you haven't set goals, now is a great time to start, as we just began the 2023-2024 4-H year.

By setting goals for the new year you position yourself to succeed. Look ahead and plan what events you want to attend, projects you want to complete, activities you want to lead or participate in, and what awards you want to receive next year.

Goal setting is important for youth to key in on certain events for the year. It helps build confidence and most importantly allows our youth to learn and grow. By setting goals at the beginning of the year, youth can reflect back occasionally to see how far they've come. Reflecting provides the opportunity for our youth to self reflect in a positive way. They can see what they have accomplished, how they accomplished it, and if there is a better or more efficient way they could do it in the future.

Start setting goals for your pin applications, key award, premium sale requirements, and for your 2024-2025 4-H projects.

## Kansas 4-H/FFA Enrollment

There is a Memorandum of Understanding (MOU) between Kansas 4-H and Kansas FFA. If youth are considering joining one or the other, please look over the MOU and take it into consideration in choosing projects that may overlap between the two organizations. Projects might include livestock, horse, rabbit, poultry, crops and agricultural mechanics.

4-H Youth Development and Agriculture Education/FFA promote teaching youth life skills. Both programs exist to maximize the participants' knowledge of agriculture and its value to our communities while educating the young people to become productive citizens. Eligible youth may participate in both 4-H and FFA but shall avoid duplication. Therefore, the following principles are required to be used in delivering the 4-H and FFA programs in Kansas as we strive to educate youth.

1. Agriculture Education teachers, FFA Advisors, Extension staff and local volunteers are encouraged to cooperate in sharing information and resources to provide educational opportunities for youth.

2. When young people are members of both 4-H and FFA, they shall plan and manage separate projects, and/or supervised agriculture experiences (SAE) programs.

3. FFA and 4-H members may enroll in the same area of experience in 4-H and FFA; however, participants cannot identify, nominate, manage, keep records on, or exhibit the same plants, animals, etc. in both organizations. Members must designate exhibits as either FFA or 4-H at weigh-in, registration or similar deadline.

4. Members may participate in judging contests and related events in FFA and 4-H but cannot represent both organizations at a contest, show or event at the same time.

5. When 4-H and FFA are conducting collaborating activities, both the 4-H and FFA organizations should be represented through emblems and information on all signs, print materials and awards.

6. Collaborating FFA and 4-H activities or events are obligated to have supervision representation from both organizations.

The above principles are in agreement with Kansas 4-H and FFA and hereby affirmed by members and professionals in order to participate in either educational program.

**An Elk County Fair FFA Intent to Participate Form has been emailed to both FFA chapters for FFA members to complete if they are planning to participate in the 2025 Elk County Fair. This will allow the Extension Office to make sure FFA members are on email lists and kept informed about details of the county fair.**

## YQCA Requirement

Youth for the Quality Care of Animals (YQCA) is a national, multispecies youth livestock quality assurance program that focuses on food safety, animal well-being, and character development, through age-appropriate educational curriculum for youth 7-21 years of age. This program is an

annual certification that grows with a young person, so the learning modules are different every year.

ALL exhibitors, including youth who will be showing market animals, commercial breeding females, and/or registered purebred breeding females at the Kansas State Fair Grand Drive and Kansas Junior Livestock Show (KJLS), will need to be YQCA certified prior to nominating animals for state shows. **Your certification from any previous year does not carry over to this year. A new certification must occur each year.**

Youth may obtain their YQCA certification using one of the following methods: Instructor-led Training or the Online Course.

**FOR ELK COUNTY MEMBERS:** Each 4-H/FFA member that wishes to sell animal(s) in the livestock premium sale at the county fair must complete YQCA certification training before **July 1**. Members may complete an online course. Once you complete a training, members will receive a certification number. That information will need to be forwarded to Stephanie Bogdahn.

There will be two face-to-face YQCA training opportunities in the Rolling Prairie District. There will be a training in Howard and one in Sedan. Dates have not been set yet, but will be very soon.

## Rock Springs 4-H Camp

Registration for 4-H Camp at Rock Springs is now open for 2025. For more information about summer camp, visit [www.rockspringsranch4hcamp.org](http://www.rockspringsranch4hcamp.org).

## Record Keeping With ZBooks

ZBooks is an online software that can be used for 4-H record keeping. 4-H'ers may choose to use either record keeping with the fillable PDF Project Report Forms or the online ZBooks software.

The Permanent Record is included in ZBooks. If you choose to keep records with ZBooks, do not feel like you have to transfer overall all of your previous years activities into the online Permanent Record. Start with this year and attach it to your previous document.

For more information about ZBooks, using the following link: <https://www.kansas4-h.org/resources/awards-and-recognition/ZBooks.html>

## December Office Closings

The Extension Office will be closed December 24 - January 1 for the Holidays.

**Saturday, January 4, 2025, 4:00 PM**

**K-STATE** Research and Extension

**Kansas 4-H Day with K-State Women's Basketball**

**Opponent: Texas Tech Red Raiders**

**\$25: Ticket, Voucher (\$10 Concessions), & Shirt**  
**\$15: Ticket & Voucher (\$10 Concessions)**

**How to Get Tickets?**

- Register! Use the QR Code or the Link below!
- Pick up ticket packages - Location TBA closer to event. (1/4/2024) 2:30pm - 3:30pm
- Doors open for the general public (1/04/2024, 3:00pm)
- Tip-off! (1/04/24, 4:00 pm)

Online registration for this event will be due **December 13, 2024**. No paper registrations will be accepted. To register, go to: <https://tinyurl.com/4HDaywiththeCats2025>

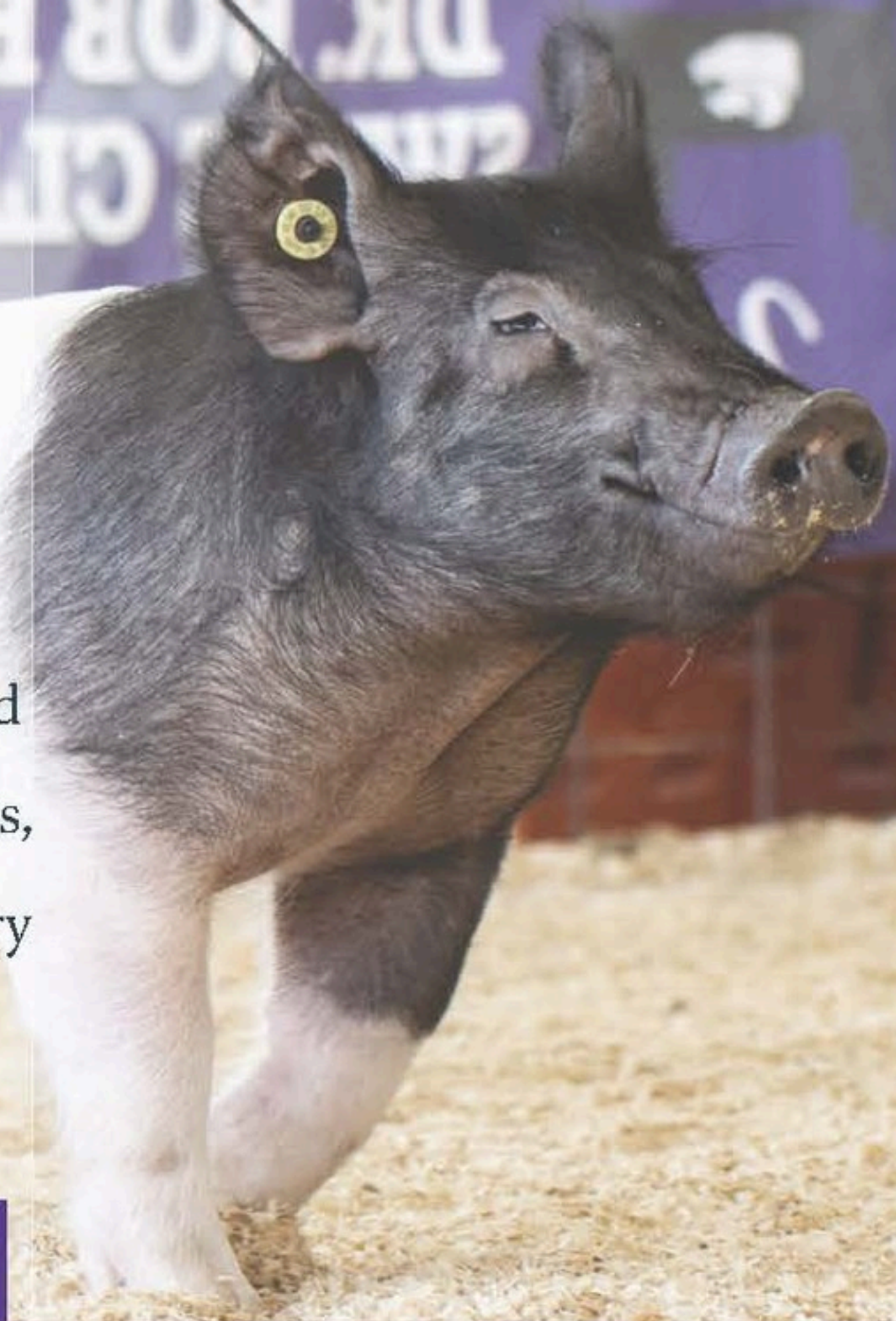
Kansas State University Agricultural Experiment Station and Cooperative Extension Service  
K-State Research and Extension is an equal opportunity provider and employer. Resource: <https://www.apa.org/topics/resilience>





**K-STATE**  
Research and Extension

# 2025 K-State Junior Swine Producer Day

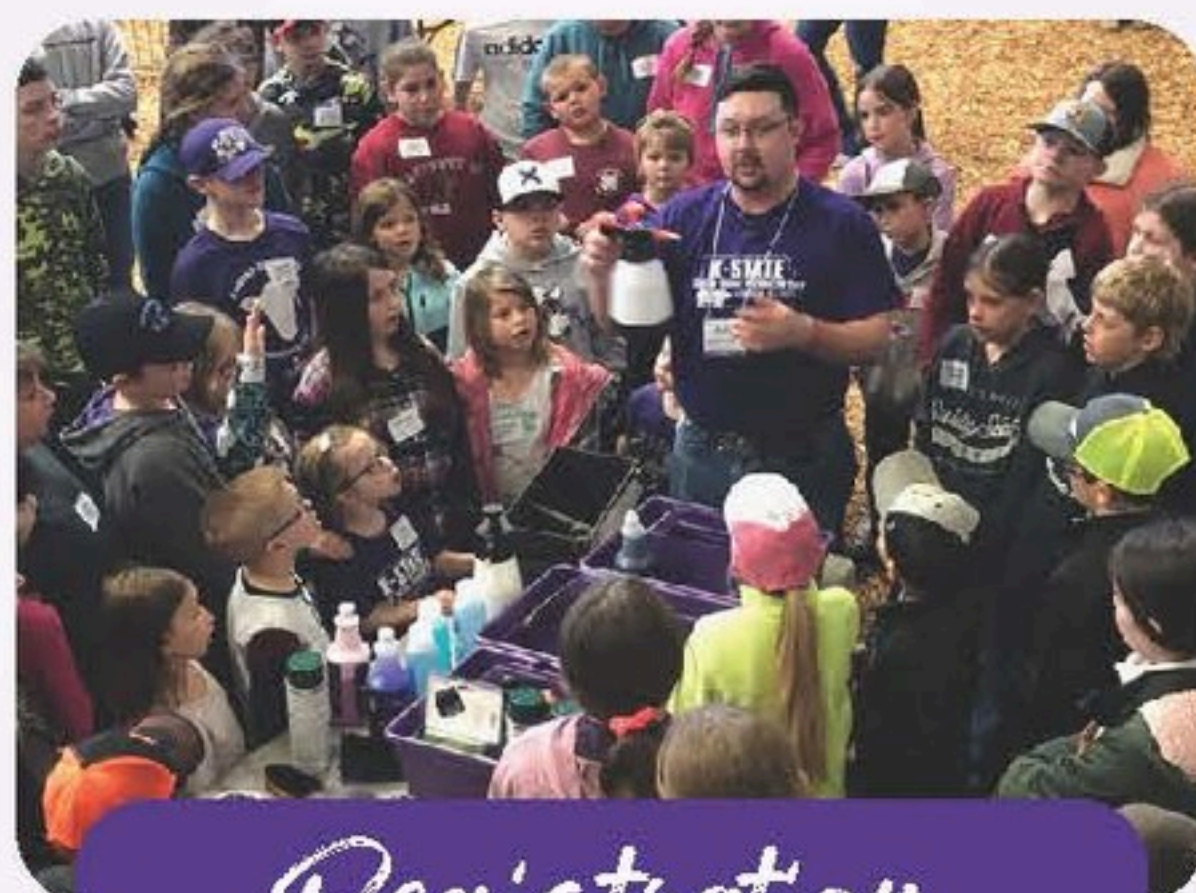


Join us on Saturday, March 1, 2025 for the biennial K-State Junior Swine Producer Day at the Stanley Stout Center in Manhattan. This educational event will be a fun-filled day in which youth, parents, agents, ag teachers, and swine project leaders can increase their knowledge of youth swine projects. Presentations will be provided by K-State faculty members, graduate students, former exhibitors, and guest speakers. All ages and skill levels are invited! Participants will receive a K-State Show Pig Guide, t-shirt, and complimentary lunch. Only those who register by February 5 will receive a t-shirt. The registration fee is \$20/person for those who sign up by the registration deadline, or \$25/person after that date. Registration is limited to 400 attendees, on a first come, first served basis. This is a family event! Anyone attending must register, including all youth and adults.

March 1



## Tentative Schedule



## Registration



## Questions?

Joel DeRouchey  
jderouch@ksu.edu  
785.532.2280

Lexie Hayes  
adhayes@ksu.edu  
785.532.1264

- 8:00AM Registration Opens
- 9:00AM Welcome
- 9:15AM Project Selection
- 10:00AM Breakout Sessions
  - Nutrition, Meats, Facilities & Equipment, Breeds & Ear Notching
- 12:00PM Lunch
- 12:45PM Health
- 1:30PM Breakout Sessions
  - Showmanship, Daily Care & Clipping, Show Day Prep, Resources
- 3:00PM Wrap-up
- 3:30PM YQCA Training (optional)

- ✓ \$20/person by February 5
- ✓ \$25/person after February 5
- ✓ Late registrants will not receive a t-shirt.
- ✓ All attendees must register, including youth, parents, and adults.
- ✓ No refunds.
- ✓ Attendance is limited to the first 400 participants to register.

Register By  
**February 5**

*\*Limited Attendance\**

 **Location**  
Stanley Stout Center

 **Register Online**  
<https://commerce.cashnet.com/KSUASIND>



Scan Me!

K-State, County Extension Councils, Extension Districts, and U.S. Department of Agriculture Cooperating. All educational programs and materials available without discrimination on the basis of race, color, religion, national origin, sex, age, or disability.

K-State Research and Extension and the Department of Animal Sciences & Industry, or their assignees, reserve the right to photograph, record the image and/or voice of participants for future research, educational, or promotional purposes. By attending, you provide consent to the above items and waive all rights to claims for payment or royalties in connection with any use of said images or recordings, unless you notify event organizers you withhold consent, in writing, prior to the event.



# K-State Junior MEAT GOAT PRODUCER DAY

# 3.22.25

## Event

Join us on Saturday, March 22, 2025 for the biennial K-State Junior Meat Goat Producer Day at the Stanley Stout Center north of the K-State campus in Manhattan. This educational program will be a fun-filled day in which youth, parents, agents, ag teachers, project leaders, and volunteers can increase their knowledge of youth meat goat projects. Presentations will be provided by K-State faculty members, graduate students, former exhibitors, and guest speakers. All ages and skill levels are invited! Participants will receive a K-State Meat Goat Show Guide, t-shirt, and complimentary lunch. Only those who register by the deadline on February 26 will receive a t-shirt. The registration fee is \$20/person before February 26 and \$25/person after the deadline. This is a family event! Anyone attending must register, including all youth, parents, and adults. Registration is limited to 400 participants, filled on a first come, first serve basis.

## Tentative Program

Friday, March 21

5:00-7:00PM *Optional Tour*  
Sheep & Meat Goat Center

Saturday, March 22

8:00AM Check-in  
9:00AM Welcome  
9:15AM Selection  
10:00AM Breakout Sessions

- Nutrition
- Facilities & Equipment
- Doe Management & Kidding







11:15AM Health & Wellness  
12:00PM Lunch  
1:00PM Breakout Sessions

- Showmanship
- Reproduction
- Clipping & Grooming

3:15PM Wrap-up  
3:30PM YQCA Training (*optional*)  
4:00-6:00PM *Optional Tour*  
Sheep & Meat Goat Center

K-State, County Extension Councils, Extension Districts, and U.S. Department of Agriculture Cooperating. All educational programs and materials available without discrimination on the basis of race, color, religion, national origin, sex, age, or disability.

## Registration

-  \$20/person by February 26
-  \$25/person after February 26
-  Late registrants will not receive a t-shirt.
-  All attendees must register, including youth, parents, & adults.
-  No refunds
-  Attendance is limited to the first 400 participants to register.



Scan me!

## Questions?

Lexie Hayes  
adhayes@ksu.edu  
785.532.1264

## Register Online

[https://commerce.cashnet.com /  
KSUASIND](https://commerce.cashnet.com/KSUASIND)

By  
**February 26**



K-State Research and Extension is an equal opportunity provider and employer.

K-State Research and Extension is committed to making its services, activities and programs accessible to all participants. If you have special requirements due to a physical, vision or hearing disability, or a dietary restriction please contact the Howard Office.

**K-STATE**  
Research and Extension



## **Rolling Prairie Extension District Elk County 4-H News**



**Rolling Prairie Extension District #8, Chautauqua and Elk Counties**  
130 South Pennsylvania  
P.O. Box 647  
Howard, KS 67349-0647