



December 2024/January 2025

Sedan Office

Courthouse
Sedan, KS 67361-1326
Phone: 620-725-5890
Fax: 620-725-5892

Howard Office

130 South Pennsylvania
Howard, KS 67349-0647
Phone: 620-374-2174
Fax: 620-374-2889

www.rollingprairie.ksu.edu

**Rolling Prairie Extension
District Staff**

Richard Fechter
Elk County Agriculture
4-H Agent
rfechter@ksu.edu

Jenny McDaniel
District Director, Chautauqua
County Agent, FCS/4-H
jlm323@ksu.edu

Linda Bever
Office Staff - Sedan
lmmbever@ksu.edu

Abbie McAlister
Office Staff – Howard
abbie21@ksu.edu



**Chautauqua County
4-H Update**



December

- 13** 4-H & K-State Women's Basketball Registration Due
- 20** Christmas Party with PVM, followed by Bowling @ Golden Pin Lanes
- 24-31** Christmas Break—Offices Closed

January

- 1** Happy New Year!—Offices Closed
- 20** Martin Luther King Jr. Day, Offices Closed

February

- 5** Jr. Swine Producers Day Registration Due, \$20 (after \$25, 400 attendee limit)
- 22-23** KSU Horse Panorama @Rock Springs (registration information coming soon, check FB),
- 26** Jr. Meat Goat Producers' Day Registration Due, \$20 (after \$25)



Kansas 4-H Day with K-State Women's Basketball

We are going to get a group together to go to the game. Register by December 10th so we can order tickets as a group. Call the office at 620-725-5890 to register. Cost is \$25. We need to know how many and if you are can drive or are looking to carpool.

Saturday, January 4, 2025, 4:00 PM

K-STATE

Research and Extension



Kansas 4-H Day with K-State Women's Basketball

Opponent: Texas Tech Red Raiders

\$25: Ticket, Voucher (\$10 Concessions), & Shirt
\$15: Ticket & Voucher (\$10 Concessions)



How to Get Tickets?

- ✓ Register! Use the QR Code or the link below!
- ✓ Pick up ticket packages - Location TBA closer to event. (1/4/2024) 2:30pm - 3:30pm
- ✓ Doors open for the general public (1/04/2024, 3:00pm)
- ✓ Tip-off! (1/04/24, 4:00 pm)



Kansas State University Agricultural Experiment Station and Cooperative Extension Service
K-State Research and Extension is an equal opportunity provider and employer. Resource:
<https://www.apa.org/topics/resilience>



Online registration for this event will be due December 13, 2024. No paper registrations will be accepted. To register, go to:

<https://tinyurl.com/4HDaywiththeCats2025>



And other really important stuff...

Save the Date!
2025 K-State Junior Producer Days



Swine - March 1

Goat - March 22



KANSAS 4-H HORSE PANORAMA

SAVE THE DATE!!

FEBRUARY 22-23, 2025
ROCK SPRINGS

Save the date! Registration information coming soon!!!



Kansas State University Agricultural Experiment Station and Cooperative Extension Service. K-State Research and Extension is an equal opportunity provider and employer.



Write your 4-H Goals for this year!



4-H Day with K-State Women's Basketball

Registration Due

12/13/24

See flyer!

4-H

CHRISTMAS PARTY



December 20, 1:30 @ Pleasant Valley Manor
3:30 @ Golden Pins Lanes

K-State Junior MEAT GOAT PRODUCER DAY







3.22.25

Event

Join us on Saturday, March 22, 2025 for the biennial K-State Junior Meat Goat Producer Day at the Stanley Stout Center north of the K-State campus in Manhattan. This educational program will be a fun-filled day in which youth, parents, agents, ag teachers, project leaders, and volunteers can increase their knowledge of youth meat goat projects. Presentations will be provided by K-State faculty members, graduate students, former exhibitors, and guest speakers. All ages and skill levels are invited! Participants will receive a K-State Meat Goat Show Guide, t-shirt, and complimentary lunch. Only those who register by the deadline on February 26 will receive a t-shirt. The registration fee is \$20/person before February 26 and \$25/person after the deadline. This is a family event! Anyone attending must register, including all youth, parents, and adults. Registration is limited to 400 participants, filled on a first come, first serve basis.

K-State, County Extension Councils, Extension Districts, and U.S. Department of Agriculture Cooperating. All educational programs and materials available without discrimination on the basis of race, color, religion, national origin, sex, age, or disability.

Registration

-  \$20/person by February 26
-  \$25/person after February 26
-  Late registrants will not receive a t-shirt.
-  All attendees must register, including youth, parents, & adults.
-  No refunds
-  Attendance is limited to the first 400 participants to register.



Scan me!

Questions?

Lexie Hayes
adhayes@ksu.edu
785.532.1264

Tentative Program

Friday, March 21

5:00-7:00PM *Optional Tour*
Sheep & Meat Goat Center

Saturday, March 22

8:00AM Check-in

9:00AM Welcome

9:15AM Selection

10:00AM Breakout Sessions

- Nutrition
- Facilities & Equipment
- Doe Management & Kidding

11:15AM Health & Wellness

12:00PM Lunch

1:00PM Breakout Sessions

- Showmanship
- Reproduction
- Clipping & Grooming

3:15PM Wrap-up

3:30PM YQCA Training (*optional*)

4:00-6:00PM *Optional Tour*
Sheep & Meat Goat Center

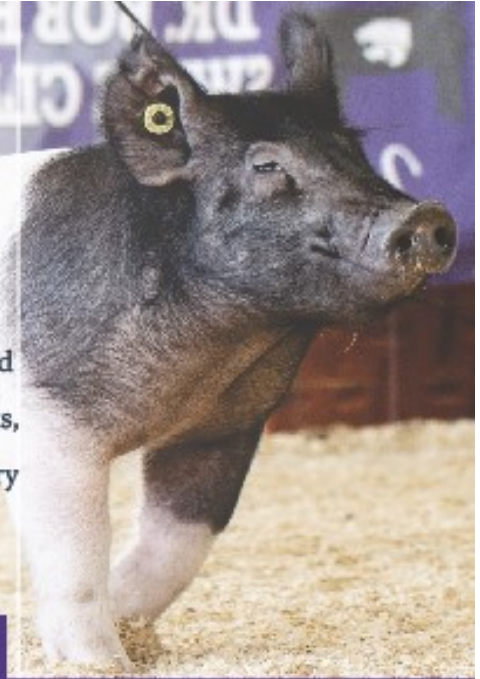
Register Online

[https://commerce.cashnet.com /
KSUASIND](https://commerce.cashnet.com/KSUASIND)

By
February 26



2025 K-State Junior Swine Producer Day



Join us on Saturday, March 1, 2025 for the biennial K-State Junior Swine Producer Day at the Stanley Stout Center in Manhattan. This educational event will be a fun-filled day in which youth, parents, agents, ag teachers, and swine project leaders can increase their knowledge of youth swine projects. Presentations will be provided by K-State faculty members, graduate students, former exhibitors, and guest speakers. All ages and skill levels are invited! Participants will receive a K-State Show Pig Guide, t-shirt, and complimentary lunch. Only those who register by February 5 will receive a t-shirt. The registration fee is \$20/person for those who sign up by the registration deadline, or \$25/person after that date. Registration is limited to 400 attendees, on a first come, first served basis. This is a family event! Anyone attending must register, including all youth and adults.

March 1



Tentative Schedule

- 8:00AM Registration Opens
- 9:00AM Welcome
- 9:15AM Project Selection
- 10:00AM Breakout Sessions
 - Nutrition, Meats, Facilities & Equipment, Breeds & Ear Notching
- 12:00PM Lunch
- 12:45PM Health
- 1:30PM Breakout Sessions
 - Showmanship, Daily Care & Clipping, Show Day Prep, Resources
- 3:00PM Wrap-up
- 3:30PM YQCA Training (optional)

Location
Stanley Stout Center



Registration

- ☑ \$20/person by February 5
- ☑ \$25/person after February 5
- ☑ Late registrants will not receive a t-shirt.
- ☑ All attendees must register, including youth, parents, and adults.
- ☑ No refunds.
- ☑ Attendance is limited to the first 400 participants to register.

Register Online
<https://commerce.cashnet.com/KSUASIND>



Questions?

Joel DeRouchey
jderouch@ksu.edu
785.532.2280

Lexie Hayes
adhayes@ksu.edu
785.532.1264

Register By

February 5

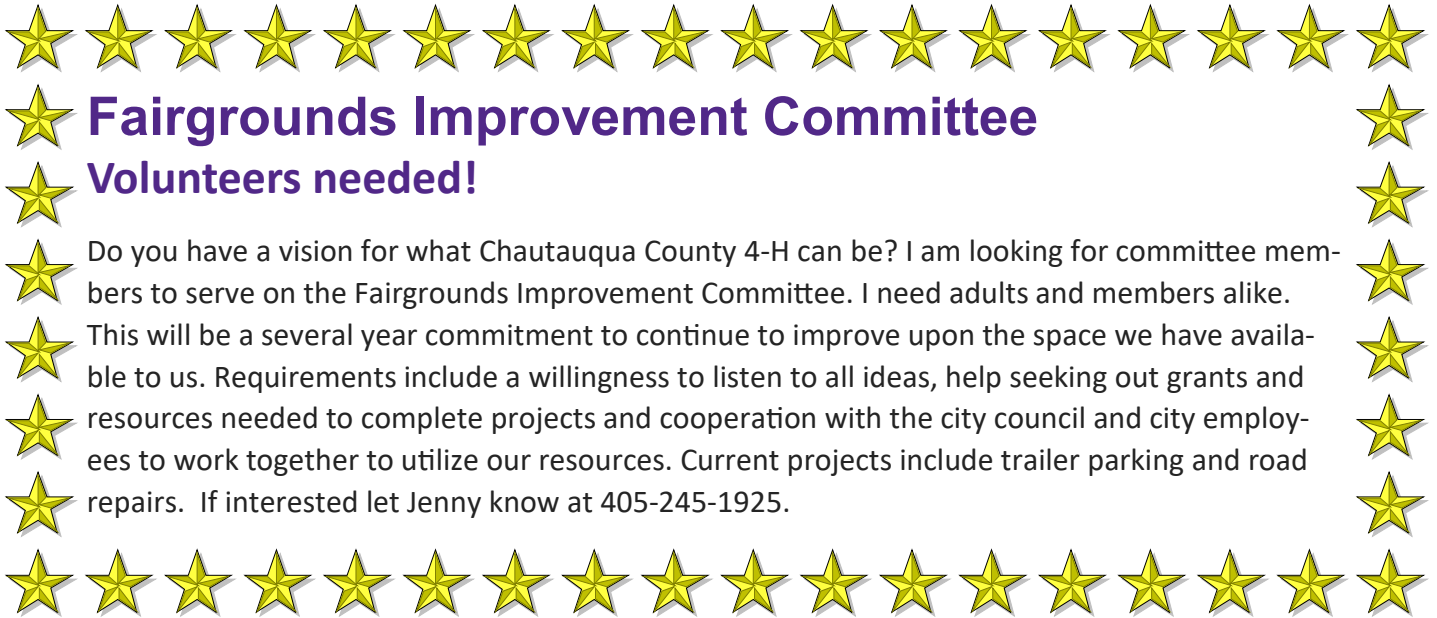
Limited Attendance



Scan Me!

K-State, County Extension Councils, Extension Districts, and U.S. Department of Agriculture Cooperating. All educational programs and materials available without discrimination on the basis of race, color, religion, national origin, sex, age, or disability.

K-State Research and Extension and the Department of Animal Sciences & Industry, or their assignees, reserve the right to photograph, record the image and/or voice of participants for future research, educational, or promotional purposes. By attending, you provide consent to the above items and waive all rights to claims for payment or royalties in connection with any use of said images or recordings, unless you notify event organizers you withhold consent, in writing, prior to the event.



Fairgrounds Improvement Committee

Volunteers needed!

Do you have a vision for what Chautauqua County 4-H can be? I am looking for committee members to serve on the Fairgrounds Improvement Committee. I need adults and members alike. This will be a several year commitment to continue to improve upon the space we have available to us. Requirements include a willingness to listen to all ideas, help seeking out grants and resources needed to complete projects and cooperation with the city council and city employees to work together to utilize our resources. Current projects include trailer parking and road repairs. If interested let Jenny know at 405-245-1925.



4-H Council News

4-H Council met on November 13 and elected a new slate of officers. Oakley Carter (Prairie Pride) will be the new President for the 2024-2025 4-H Year. He will be assisted by Vice President Adalyn Leonard (Cedar Vale Go Getters), Secretary Lane Robinson (Sedan Willing Workers), and Treasurer Kaden McCoy (Prairie Pride).

Council Representatives from each club are:

Cedar Vale Go Getters: Haidyn Leonard, Addeson Stong

Prairie Pride: Tiffany McDaniel

Willing Workers: Addy Sproul, David Sproul, Johnny Sproul

Our next Council meeting will be on January 8th at 7:00 p.m. at the Sedan Extension Office.

4-H Enrollment

September 30 was the end of the 4-H year and October 1 started re-enrollment for the new 4-H year. Enrollments and re-enrollments will all be done on 4-H Online, <https://v2.4honline.com/#/user/sign-in> . If you can't remember how to log on or are having trouble, call Jenny at (620) 725-5890.

Remember, you must be 7 by January 1, 2024 to enroll in 4-H. Kids ages 5-7 may sign up to be in Cloverbuds. Cloverbuds can also sign up using 4-H Online free of charge.

Enrollment Deadline for competing in the county fair will be **February 1st**. Drop/Add Deadline will still be **May 1st**.

NOTE:

If you fully participated in Bingo mark "pay with check" and I will input the coupon code when I approve you.

Updated 4-H Horse ID Form

[Submitted by Kelsey Nordyke](#)

The Kansas 4-H Horse Identification Form has been updated and is available for https://bookstore.ksre.ksu.edu/item/horse-identification-certificate_P1039. We will only be identifying 4-H horse projects using the 4-H Horse ID Certificate. We will no longer accept registration papers to identify horses.

The following email went out to all those currently enrolled in the Horse Project:

“The [Kansas 4-H Horse ID Certificate \(P1039\)](#) has been updated for the 2025 4-H program year. Beginning with the 2025 4-H program year, please use the new form and destroy previously used 4-H Horse ID Certificates. As a reminder, to properly identify your horse, complete the 4-H Horse ID Certificate, have your Extension Agent sign it and copy it. A COPY of the Horse ID Certificate is kept on file in the Extension Office and the 4-H Horse member maintains the ORIGINAL certificate. The original certificate is presented by the 4-H member to show staff for check-in at the local 4-H horse shows. Beginning in 2025, registration papers WILL NOT be accepted to identify horses for the 4-H Horse project. An [example of the Horse ID Certificate](#) is available online (see below).

Additionally, the 4-H Horse Show Rulebook (S133) is currently being revised. It will be released in mid-October. This will not affect any deadlines within the 4-H Horse project. Supplemental educational materials will also be released throughout the year to assist 4-H members, leaders and Extension staff with the 4-H Horse program.”

An example of a completed form can be viewed at <https://www.kansas4-h.org/projects/animal-science/horse/docs/SampleHorseID.pdf> There is also a copy of the sample in the Extension Office.

Attention ALL Horse Project Members!!
BIG CHANGE from the State!



KSU Horse Panorama

The KSU Horse Panorama is an annual event for Kansas 4-H members ages 9–18 that features a variety of horse-related contests, demonstrations, and project talks:

Contests: Quiz bowl, hippology, public speaking, photography, and educational posters

Horse Bowl: A competitive contest that helps young people develop knowledge of equine-related topics

Demonstrations and project talks: Educational opportunities for participants

The 2025 KSU Horse Panorama will take place on February 22-23. More information about the Panorama and registration is coming soon.

The KSU Horse Panorama is a chance for Kansas youth to showcase their knowledge and skills about horses.

Get a group together and start studying all things equine!



2024-2025 4-H Council President

The 2024-2025 4-H Council President is Oakley Carter. He is a Senior at Sedan High School. His favorite 4-H activity is the fair. One of Oakley's big accomplishments in 4-H happened in 2023 when he won the Round Robin Championship. His favorite project is Meat Goats.

Oakley is also busy outside of 4-H. He is the current 5K Cross Country Record Holder at Sedan High School. He is also a member of FFA.

Oakley's words of wisdom for younger 4-H'ers: "All 4-H members should try and be good leaders in their community." 4-H Council is in good hands with Oakley!

Chautauqua County

4-H CHRISTMAS PARTY

December 20, 2024 | 1:30-3:00 PM
Pleasant Valley Manor Sedan, KS
3:30-4:30 PM
Golden Pin Bowling Alley Sedan, KS

Cost is \$5 per participant to bowl. Be sure to wear socks. We will be volunteering at Pleasant Valley Manor from 1:30-3PM! Hope you can join us!



Traits of a Strong 4-H Club

Its time to start looking at our Club Health. No, that doesn't mean a Health Club for working out. Club Health is evaluating your 4-H Club to see if it is on the right track. Here is a checklist of traits of a strong club that is thriving.

- ◆ Fun for members!
- ◆ Standard meeting times and places
- ◆ Growing in numbers
- ◆ Doing things
- ◆ Strong leadership (adult and youth)
- ◆ Visible in the community
- ◆ New members (and their families) feel welcomed and supported
- ◆ Members receive recognition for MANY accomplishments
- ◆ Members participate in and beyond the club level activities, events and trainings.
- ◆ Family involvement
- ◆ Lots of parents at the meetings & activities
- ◆ Good communication
- ◆ Meetings belong to the members
- ◆ Club officers run the club meetings.

SETTING GOALS

Setting measurable goals helps guide you in your 4-H year. At the beginning of the year, sit down and decide what you want to accomplish through your 4-H experiences. There is a really good FREE publication in the KSU Online Bookstore. If you can't access it, come by the office and we'll give you a copy. It explains how to write a goal and gives several examples. It also provides areas to write all your goals in one place. This would be a beneficial guide to keep in your 4-H box, as well as help you get those goals written for your Record Book. Click here to find the Goal Setting page: <https://bookstore.ksre.ksu.edu/Category.aspx?id=1&catId=1007>

How do I write a good goal for my record book?

Don't make "winning" your goal. Think of your goals as your action plan for the year. That's why they need to be written down at the beginning of your 4-H year.

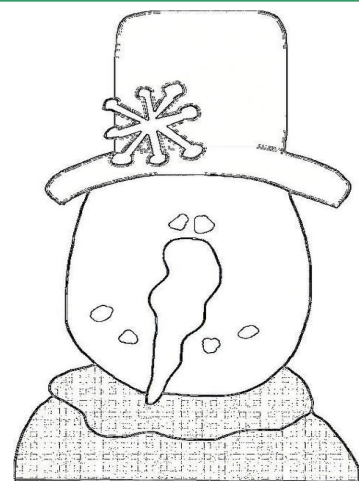
Examples:

- ⇒ I will do 2 project presentations about what I've learned in my geology project by February.
- ⇒ I will learn more about the health and confirmation of horses in order to compete in the Horse Panorama.

Your main goal is always to make the best better. That's you, personally. Winning is a consequence of all your other learning and hard work.

Color

Me! →





Rolling Prairie Extension District #8,
Chautauqua and Elk Counties
215 N. Chautauqua
Sedan, KS 67361

Rolling Prairie Extension District on Facebook



“Like” our Facebook page to get the most up-to-date information and news about the happenings of Rolling Prairie District! Visit <https://www.facebook.com/rollingprairieextension/> to like our page.

"K-State Research and Extension is committed to providing equal opportunity for participation in all programs, services and activities. Program information may be available in languages other than English. Reasonable accommodations for persons with disabilities, including alternative means of communication (e.g., Braille, large print, audio tape, and American Sign Language) may be requested by contacting the event contact (insert name) two weeks prior to the start of the event (insert deadline date) at (insert phone number and email). Requests received after this date will be honored when it is feasible to do so. Language access services, such as interpretation or translation of vital information, will be provided free of charge to limited English proficient individuals upon request."

*Knowledge
for Life*