



November 2024

**Sedan Office**

Courthouse  
Sedan, KS 67361-1326  
Phone: 620-725-5890  
Fax: 620-725-5892

**Howard Office**

130 South Pennsylvania  
Howard, KS 67349-0647  
Phone: 620-374-2174  
Fax: 620-374-2889

[www.rollingprairie.ksu.edu](http://www.rollingprairie.ksu.edu)

**Rolling Prairie Extension  
District Staff**

Richard Fechter  
Elk County Agriculture  
4-H Agent  
[rfechter@ksu.edu](mailto:rfechter@ksu.edu)

Jenny McDaniel  
District Director, Chautauqua  
County Agent, FCS/4-H  
[jlm323@ksu.edu](mailto:jlm323@ksu.edu)

Linda Bever  
Office Staff - Sedan  
[lmbever@ksu.edu](mailto:lmbever@ksu.edu)

Abbie McAlister  
Office Staff – Howard  
[abbie21@ksu.edu](mailto:abbie21@ksu.edu)



**Chautauqua County  
4-H Update**



**November**

- 11** Veteran’s Day—Offices Closed
- 13** RSVP for Officer and Leader Retreat
- 14** 4-H Officer and Leader Retreat 4-8pm –Sedan
- 16** County 4-H Achievement Banquet and Supporters’ Appreciation Dinner, noon @ 4-H Building
- 23-24** Kansas Youth Leadership Forum and Kansas Volunteer Leader Forum
- 28-29** Thanksgiving—Offices Closed

**December**

- TBD** Christmas Party with PVM, followed by Bowling @ Golden Pin Lanes
- 23-1/1/2025** Christmas/New Year Break—Offices Closed



If you have any pictures from the fair or other 4-H events during the year, please share with me. I am needing pictures for the slide show at the Achievement Banquet.

Email me at [lmbever@ksu.edu](mailto:lmbever@ksu.edu)

The complex block is enclosed in a decorative border that looks like a film strip with sprocket holes. It features a camera icon at the top center and a film camera icon in each of the four corners.

## Explore 4-H!

Don't forget you need to be enrolled in a project to participate in the fair. Don't limit yourself by not enrolling in what could be your new favorite project.



## 4-H Council Meeting

The Chautauqua County 4-H Council Meeting will be held on November 13, 2024 at 7:00 pm in the Sedan Courthouse.

## 4-H Enrollment

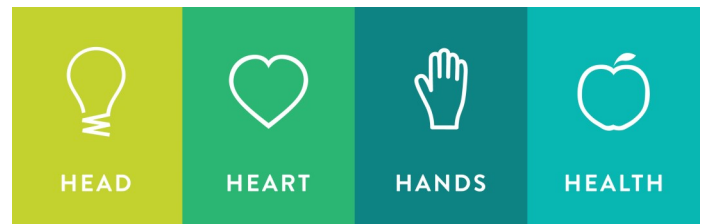
September 30 is the end of the 4-H year and October 1 starts re-enrollment for the new 4-H year. Enrollments and re-enrollments will all be done on 4-H Online, <https://v2.4honline.com/#/user/sign-in>. If you can't remember how to log on or are having trouble, call Jenny at (620) 725-5890.

Remember, you must be 7 by January 1, 2024 to enroll in 4-H. Kids ages 5-7 may sign up to be in Cloverbuds. Cloverbuds can also sign up using 4-H Online free of charge.

Enrollment Deadline for competing in the county fair will be **February 1<sup>st</sup>**. Drop/Add Deadline will still be **May 1<sup>st</sup>**.

### NOTE:

**If you fully participate in Bingo mark "pay with check" and I will input the coupon code when I approve you.**



## 4-H Council and Elections

Reminder due to not enough 4-H members being present at the last council meeting we will be doing elections for 2024-25 at the November 13<sup>th</sup> meeting at 7pm. It is imperative that all members and leaders elected to serve on council for their clubs be at all council meetings. I try to make sure that we are not having a meeting simply to have a meeting and that we only meet when we have business to discuss. Please make it a priority to be there or to have a substitute there.





**And other really important stuff...**

*Save the Date!*  
2025 K-State Junior Producer Days

K-STATE  
Research and Extension

Swine - March 1

Goat - March 22

YLP

KANSAS 4-H  
HORSE  
PANORAMA

SAVE THE DATE!!

FEBRUARY 22-23, 2025  
ROCK SPRINGS

Save the date! Registration information coming soon!!!

K-STATE  
Research and Extension

## County 4-H Appreciation Dinner & Achievement Banquet

The Achievement Banquet will be **November 16, 2024 at NOON** in the **4-H Building** at the Sedan Fairgrounds. 4-H Council will provide the meat and tableware. Each 4-H Family is to bring a side dish or dessert.

**Remember to invite any supporters! This includes banner & buckle donors, bucket calf donors, Premium Sale supporters, leaders, grandparents, family members, anyone who helps us "Make the Best Better!"**



# K-State Junior MEAT GOAT PRODUCER DAY







# 3.22.25

## Event

Join us on Saturday, March 22, 2025 for the biennial K-State Junior Meat Goat Producer Day at the Stanley Stout Center north of the K-State campus in Manhattan. This educational program will be a fun-filled day in which youth, parents, agents, ag teachers, project leaders, and volunteers can increase their knowledge of youth meat goat projects. Presentations will be provided by K-State faculty members, graduate students, former exhibitors, and guest speakers. All ages and skill levels are invited! Participants will receive a K-State Meat Goat Show Guide, t-shirt, and complimentary lunch. Only those who register by the deadline on February 26 will receive a t-shirt. The registration fee is \$20/person before February 26 and \$25/person after the deadline. This is a family event! Anyone attending must register, including all youth, parents, and adults. Registration is limited to 400 participants, filled on a first come, first serve basis.

K-State, County Extension Councils, Extension Districts, and U.S. Department of Agriculture Cooperating. All educational programs and materials available without discrimination on the basis of race, color, religion, national origin, sex, age, or disability.

## Registration

-  \$20/person by February 26
-  \$25/person after February 26
-  Late registrants will not receive a t-shirt.
-  All attendees must register, including youth, parents, & adults.
-  No refunds
-  Attendance is limited to the first 400 participants to register.



Scan me!

## Questions?

Lexie Hayes  
adhayes@ksu.edu  
785.532.1264

## Tentative Program

Friday, March 21

5:00-7:00PM *Optional Tour*  
Sheep & Meat Goat Center

Saturday, March 22

8:00AM Check-in

9:00AM Welcome

9:15AM Selection

10:00AM Breakout Sessions

- Nutrition
- Facilities & Equipment
- Doe Management & Kidding

11:15AM Health & Wellness

12:00PM Lunch

1:00PM Breakout Sessions

- Showmanship
- Reproduction
- Clipping & Grooming

3:15PM Wrap-up

3:30PM YQCA Training (*optional*)

4:00-6:00PM *Optional Tour*  
Sheep & Meat Goat Center

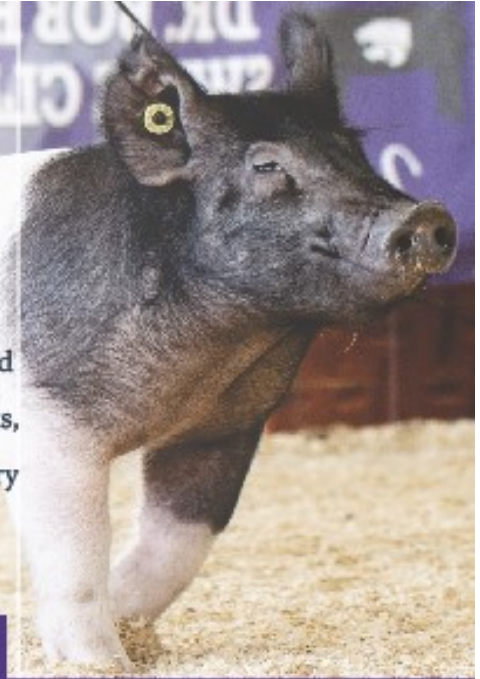
## Register Online

[https://commerce.cashnet.com/](https://commerce.cashnet.com/KSUASIND)  
KSUASIND

By  
**February 26**



# 2025 K-State Junior Swine Producer Day



Join us on Saturday, March 1, 2025 for the biennial K-State Junior Swine Producer Day at the Stanley Stout Center in Manhattan. This educational event will be a fun-filled day in which youth, parents, agents, ag teachers, and swine project leaders can increase their knowledge of youth swine projects. Presentations will be provided by K-State faculty members, graduate students, former exhibitors, and guest speakers. All ages and skill levels are invited! Participants will receive a K-State Show Pig Guide, t-shirt, and complimentary lunch. Only those who register by February 5 will receive a t-shirt. The registration fee is \$20/person for those who sign up by the registration deadline, or \$25/person after that date. Registration is limited to 400 attendees, on a first come, first served basis. This is a family event! Anyone attending must register, including all youth and adults.

## March 1



### Tentative Schedule

- 8:00AM Registration Opens
- 9:00AM Welcome
- 9:15AM Project Selection
- 10:00AM Breakout Sessions
  - Nutrition, Meats, Facilities & Equipment, Breeds & Ear Notching
- 12:00PM Lunch
- 12:45PM Health
- 1:30PM Breakout Sessions
  - Showmanship, Daily Care & Clipping, Show Day Prep, Resources
- 3:00PM Wrap-up
- 3:30PM YQCA Training (optional)



### Registration

- ☑ \$20/person by February 5
- ☑ \$25/person after February 5
- ☑ Late registrants will not receive a t-shirt.
- ☑ All attendees must register, including youth, parents, and adults.
- ☑ No refunds.
- ☑ Attendance is limited to the first 400 participants to register.



### Questions?

Joel DeRouchey  
jderouch@ksu.edu  
785.532.2280

Lexie Hayes  
adhayes@ksu.edu  
785.532.1264

## Register By

## February 5

*\*Limited Attendance\**

**Location**  
Stanley Stout Center

**Register Online**  
<https://commerce.cashnet.com/KSUASIND>



Scan Me!

K-State, County Extension Councils, Extension Districts, and U.S. Department of Agriculture Cooperating. All educational programs and materials available without discrimination on the basis of race, color, religion, national origin, sex, age, or disability.

K-State Research and Extension and the Department of Animal Sciences & Industry, or their assignees, reserve the right to photograph, record the image and/or voice of participants for future research, educational, or promotional purposes. By attending, you provide consent to the above items and waive all rights to claims for payment or royalties in connection with any use of said images or recordings, unless you notify event organizers you withhold consent, in writing, prior to the event.



## Fairgrounds Improvement Committee

### Volunteers needed!

Do you have a vision for what Chautauqua County 4-H can be? I am looking for committee members to serve on the Fairgrounds Improvement Committee. I need adults and members alike. This will be a several year commitment to continue to improve upon the space we have available to us. Requirements include a willingness to listen to all ideas, help seeking out grants and resources needed to complete projects and cooperation with the city council and city employees to work together to utilize our resources. If interested let Jenny know at 405-245-1925. We are on the agenda for Sedan City Council for November 5<sup>th</sup> at 5:30pm to review upcoming projects and keep council up-to-date with future ideas.



### Officer and Leader Retreat

New this year! We are going to do a round table retreat instead of our traditional officer training. I am hoping this will allow for a more personal setting with some additional peer to peer training. All officers and leaders are encouraged to attend additionally anyone else who would like to learn about the structure and leadership within Chautauqua County 4-H. We will meet at the Senior Citizens' Center in Sedan on Thursday, November 14 from 4-8pm. Dinner will be served. Please RSVP by November 13<sup>th</sup> so I can get a headcount.

# Updated 4-H Horse ID Form

[Submitted by Kelsey Nordyke](#)

The Kansas 4-H Horse Identification Form has been updated and is available for [https://bookstore.ksre.ksu.edu/item/horse-identification-certificate\\_P1039](https://bookstore.ksre.ksu.edu/item/horse-identification-certificate_P1039)

Beginning with the 2025 4-H Program year, please direct your 4-H Horse members to discard the previous Horse ID Form and use the new form. As a reminder, the 4-H member is to keep the original Horse ID and the local Extension Office is to keep a copy.

An example of a completed form can be viewed at <https://www.kansas4-h.org/projects/animal-science/horse/docs/SampleHorseID.pdf>

**Attention ALL Horse Project Members!!**  
**BIG CHANGE from the State!**



## Kansas 4-H Projects

### Animal Science

- Beef
- Dairy Cattle
- Dairy Goats
- Dog
- Horse
- Meat Goats
- Pets
- Poultry
- Rabbits
- Sheep
- Swine
- Veterinary Science

### Communication & Expressive Arts

- Communications
- Performing Arts
- Photography
- Visual Arts

### Consumer & Family Science

- Sewing & Textile Design
- Shopping in Style
- Family Studies
- Fiber Arts
- Foods & Nutrition
- Health & Wellness
- Interior Design & Architecture

### Natural Resources

- Environmental Science
- Geology
- Shooting Sports
- Wildlife

### Leadership & Personal Development

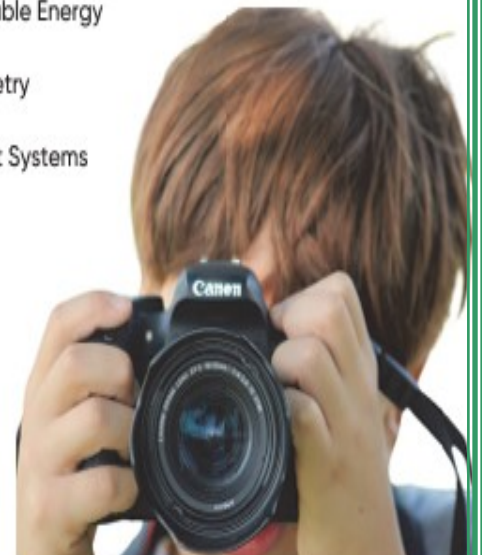
- Civic Engagement
- Leadership
- Reading Adventures
- Self-Determined

### Plant Sciences

- Entomology
- Agronomy
- Forestry
- Horticulture & Landscape Design

### Engineering & Technology

- Ag Mechanics Welding
- Building Block Engineering
- Astronomy
- Computer Science
- Electric & Renewable Energy
- Robotics
- Aerospace/Rocketry
- Small Engines
- Uncrewed Aircraft Systems
- Woodworking





## Traits of a Strong 4-H Club

Its time to start looking at our Club Health. No, that doesn't mean a Health Club for working out. Club Health is evaluating your 4-H Club to see if it is on the right track. Here is a checklist of traits of a strong club that is thriving.

- ◆ Fun for members!
- ◆ Standard meeting times and places
- ◆ Growing in numbers
- ◆ Doing things
- ◆ Strong leadership (adult and youth)
- ◆ Visible in the community
- ◆ New members (and their families) feel welcomed and supported
- ◆ Members receive recognition for MANY accomplishments
- ◆ Members participate in and beyond the club level activities, events and trainings.
- ◆ Family involvement
- ◆ Lots of parents at the meetings & activities
- ◆ Good communication
- ◆ Meetings belong to the members
- ◆ Club officers run the club meetings.



Xavier Zargoza is a first year member of the Sedan Willing Workers 4-H Club. He is in the 1st grade at Sedan Elementary School. When asked why he joined 4-H, Xavier said, "I joined because I think it's going to be a



lot of fun!! I want to show goats, cows, and ducks! I'm really excited to learn more about all the animals!"

Xavier and his younger brother, Xander, sold over \$200 in BINGO tickets. Way to go Xavier!! We will be looking for more achievements from you throughout the next decade!!!

4-H is more than  
*Ribbons and Awards*  
**IT'S ABOUT**  
PEOPLE  
*The* EXPERIENCES  
LIFE-LONG  
SKILLS  
MEMORIES  
COUNTY FAIR  
**IT'S ABOUT**  
BEING A ROLE MODEL  
GIVING BACK  
*and making the best better!*



## Volunteer Mandate

While volunteerism is crucial to the success of 4-H, it is a privilege, not a right to be a 4-H volunteer.

According to the KSU Department of 4-H Youth Development, all individuals who work directly with youth are required to complete the Kansas 4-H Volunteer screening process. Volunteer screening is done in order to assure a safe, positive, and nurturing environment for all youth involved with the Kansas 4-H programs and provide protection for the child, the volunteer, the agent, the Extension Board, and the Kansas State Research and Extension.

Initial screening of all volunteers and staff will occur when they sign up to volunteer or are employed as an Extension professional. Re-screening for volunteers will be done every three years from when the original screening was completed.

### Requirements:

Those roles that need Board certification are included, but not limited to, those positions that follow:

- ⇒ Each club needs two Extension Board certified volunteers to be 4-H Adult Leaders.
- ⇒ Each project leader needs Extension Board certification.
- ⇒ Volunteers who have access to funds raised on behalf of 4-H
- ⇒ Any individual that supervises 4-H'ers needs to be a Board Certified volunteer.

Board Certification is not difficult. It can be done online, but it must be done in cooperation with the County Extension Agent.

**Consequences: If there are not Board Certified Volunteers, the 4-H Club runs the risk of losing it's charter until certified volunteers are in place.**

## Volunteer Screening Checklist:

The first thing to do is Create a 4-H Online Account. Many of you already have one. If not, create one at <https://4honline.com/#/user/sign-in>

On the 4-H Online website, create your Adult Volunteer record.

To complete this process, you will need to provide information for the Volunteer Application. Some information you may need to collect beforehand, such as:

- ◆ Employer and supervisor contact information
- ◆ Residential history
- ◆ Previous 4-H volunteer history
- ◆ Volunteer experiences
- ◆ 3 References and their contact information (preferably not related to you)
- ◆ Health Insurance and doctor contact information (this is NOT proof of insurance)



## OFFICER & LEADER

### RETREAT

Thursday, November 14, 2024

Sedan Senior Citizen Center

4-8:00 p.m.

Dinner will be served.

Please RSVP by November 13.



Rolling Prairie Extension District #8,  
Chautauqua and Elk Counties  
215 N. Chautauqua  
Sedan, KS 67361

### Rolling Prairie Extension District on Facebook



“Like” our Facebook page to get the most up-to-date information and news about the happenings of Rolling Prairie District! Visit <https://www.facebook.com/rollingprairieextension/> to like our page.

"K-State Research and Extension is committed to providing equal opportunity for participation in all programs, services and activities. Program information may be available in languages other than English. Reasonable accommodations for persons with disabilities, including alternative means of communication (e.g., Braille, large print, audio tape, and American Sign Language) may be requested by contacting the event contact (insert name) two weeks prior to the start of the event (insert deadline date) at (insert phone number and email). Requests received after this date will be honored when it is feasible to do so. Language access services, such as interpretation or translation of vital information, will be provided free of charge to limited English proficient individuals upon request."

*Knowledge  
for Life*