



February 2025

Sedan Office

Courthouse
Sedan, KS 67361-1326
Phone: 620-725-5890
Fax: 620-725-5892



Chautauqua County
4-H Update



Howard Office

130 South Pennsylvania
Howard, KS 67349-0647
Phone: 620-374-2174
Fax: 620-374-2889

www.rollingprairie.ksu.edu

**Rolling Prairie Extension
District Staff**

Richard Fechter
Elk County Agriculture
4-H Agent
rfechter@ksu.edu

Jenny McDaniel
District Director, Chautauqua
County Agent, FCS/4-H
jlm323@ksu.edu

Linda Bever
Office Staff - Sedan
lmbever@ksu.edu

Abbie McAlister
Office Staff – Howard
abbie21@ksu.edu

February

- 1** Enrollment Deadline for exhibiting at the county fair
- 5** Jr. Swine Producers Day Registration Due, \$20 (after \$25, 400 attendee limit)
- 12** 4-H Council—Sedan
- 16-17** Citizenship in Action—Topeka
- 22-23** KSU Horse Panorama @Rock Springs (registration information coming soon, check FB),
- 26** Jr. Meat Goat Producers' Day Registration Due, \$20 (after \$25)
- 28** CQ County Club Day/Favorite Foods ENTRIES DUE

March

- 1** State 4-H Scholarship Applications Due
- 1** KSU Junior Swine Producer Days—Manhattan
- 8** CQ County Club Day/Favorite Foods Show—Sedan
- 19** YQCA—Howard, Extension Office, 6:30 p.m.
- 22** KSU Junior Meat Goat Producer Day—Manhattan
- 22** Regional 4-H Club Day—Madison
- 23** Market Beef Weigh In—Sedan

CQ County Club Day and Favorite Food Show

The Favorite Food Show will be held this year on the same day as 4-H Club Day, February 24 at Sedan High School. Entries for Club Day, and Favorite Foods Show are due by Friday, February 16. Information has been posted to the Rolling Prairie website, under Chautauqua County 4-H, as well as entry forms about these events.

<https://www.rollingprairie.k-state.edu/cq4-h/activities/index.html>

Entry forms for club days are also on the above mentioned website.



Gavel Games

Parliamentary procedure is one of the lasting skills identified by former 4-H members that was developed during their 4-H years.

Gavel Games is designed to teach parliamentary procedure in a fun, meaningful way. In a Gavel Games

contest, four 4-H'ers make up a team and act as officers for a 4-H business model meeting. President, Vice President, Secretary, and Treasurer are the only officers in this parliamentary exercise.

Each team takes a written test as well. Part of the test is the order of business. Teams receive a score on both the written test and oral presentation. Age divisions are Junior (13 and under) and Senior (14 and older).

If anyone is interested in Gavel Games or would like more information, let me know. I will be glad to help anyone wanting to try this. Clubs and members can do both model meeting and Gavel Games if they want. Members on a Gavel Games team do not have to be from the same 4-H club.

On our website, under Club Days, is a publication about Gavel Games. This is a document developed by Richard Fechter, Rolling Prairies Extension Agent in Elk County. It is now used by all the counties in our Regional 4-H Club Day group.

Model Meetings

Clubs performing a model meeting are required to make at least one motion from the five types of motions. The types of motions are: Main, Subsidiary, Incidental, Privileged, and Unclassified. Motions that fall under these categories/types can be found in **A Guide to Parliamentary Practice for your Club** on pages 2-3 or in **The Meeting Will Come To Order** on page 18.





And other really important stuff...

Save the Date!
2025 K-State Junior Producer Days



Swine - March 1

Goat - March 22



**KANSAS 4-H
HORSE
PANORAMA**

SAVE THE DATE!!

**FEBRUARY 22-23, 2025
ROCK SPRINGS**

Save the date! Registration information coming soon!!!



Kansas State University Agricultural Experiment Station and Cooperative Extension Service. K-State Research and Extension is an equal opportunity provider and employer.

SENIORS!!!

- ⇒ YQCA Scholarship Applications DUE February 17
- ⇒ STATE 4-H Scholarship Applications DUE March 1
- ⇒ COUNTY 4-H Scholarship & Cord Applications DUE April 1



CHAUTAUQUA COUNTY CLUB DAY

ENTRIES DUE 2/28/25

Project Talks

Model Meetings

Favorite Foods Show



Demonstrations

Senior Interviews

Illustrated Talks

Questions on 4-H Club Day

Are you unsure of what a good project talk, demonstration or illustrated talk looks like? Or, maybe you have no idea what 4-H Club Day is. Well, to ease your confusion, here is some information about 4-H Club Day.

What is 4-H Club Day?

4-H Club Day is where 4-H'ers can participate in activities either as a group or an individual. Activities can range from model meetings, demonstrations, project talks, dancing, music, dramatics, etc. It is competitive, with judges giving ratings in top blue, blue, red, and white placings. It is a good time for 4-H'ers to develop self-confidence and poise. It is an opportunity to perform in front of others and share one's 4-H experience.

What is the difference between all these presentations?

Project Talks

PLEASE NOTE: PROJECT TALKS ARE FOR MEMBERS 7-11 YEARS OLD

Quite simply it is a talk about one of your projects. It can tell about your experiences in the project and/or give information relating to your project. The talk should be over something you are familiar with and be of interest to yourself and

others. Questions are not asked at the end of a project talk.

1. Tells about
2. Purpose: To inform
3. Visuals: Charts only

Demonstrations

A demonstration is simply showing and telling how to do something. It is a teaching method.

Most demonstrations incorporate an introduction, a body that is the "Show and Tell" part, and a summary to stress the important parts of your demonstration.

1. Shows how
2. Purpose: To teach
3. Visuals: Charts and aids for making a product.

Illustrated Talk

An illustrated talk is talking and telling how to do something by using pictures, charts, models, equipment, and other types of visual aids.

1. Tells how
2. Purpose: To teach
3. Visuals: Models, charts

Show N Share Talk

FOR FIRST YEAR MEMBERS ONLY!

This is an opportunity for first year members to give a talk or presentation in front of people for the first time. The judge will provide comments to the 4-H'er and they will receive a ribbon.

These talks are not eligible for Regional 4-H Club Day.

More information about what the judges will be looking for can be found on the [Rolling Prairie](https://www.rollingprairie.k-state.edu/cq4-h/activities/index.html) website in the updated score sheets for each Club Day category and other information about 4-H Club Day .

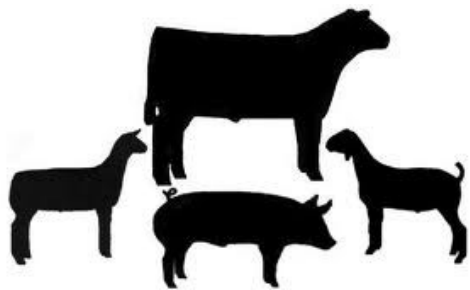
<https://www.rollingprairie.k-state.edu/cq4-h/activities/index.html>

Livestock Tagging

If you wish to exhibit an animal of any species at the 2025 Chautauqua County 4-H Fair, it must be tagged and/or ownership verified by registration papers, including dairy and bucket calf. All breeding animals must have ownership as of the date of that species weigh in/tag day. Commercial livestock needs to be tagged with a 4-H tag and registered purebred livestock must have registration papers in the exhibitor's name.

Breeding animals that were tagged in previous years are eligible for 2025, so long as the previous year's tag is still in its ear. Therefore they do not need to be retagged.

Breeding beef heifers must be tagged at the weigh in and tag day on March 23 or have registration papers by that date. Breeding meat goats, sheep and swine must be tagged on April 25 or 26 or have registration papers by this date. Dairy cattle/goats and bucket calves need to be tagged and recorded with the Extension



Spring Weigh-In Dates

**Market Beef Weigh--In: March 23 in Sedan.
120 days prior to fair.**

**Market Hog/Lamb/Meat Goats Weigh-In:
April 25-26 in Sedan. 89-88 days before the
fair.**

Tags are \$4.00 each.

SPRING SHOW DATES

April 26

Spring Beef Show—Sedan

May 17

**Spring Small Animal Livestock
Show—Sedan**



YQCA Requirement

Youth for the Quality Care of Animals (YQCA) is a national, multispecies youth livestock quality assurance program that focuses on food safety, animal well-being, and character development through age-appropriate educational curriculum for youth 7-21 years of age. This program is an annual certification that grows with a young person, so the learning modules are different every year. ALL exhibitors, including youth who will be showing market animals, commercial breeding females, and/or registered purebred breeding females at the Kansas State Fair Grand Drive and Kansas Junior Livestock Show (KJLS), will need to be YQCA certified prior to nominating animals for State shows. Your certification from any previous year does not carry over to this year. A new certification must occur each year.

Youth may obtain their YQCA certification using one of the following methods: Instructor-led Training or the Online Course. There will be two face-to-face YQCA training opportunities in the Rolling Prairie District. The **Howard training will be on Wednesday, March 19th at 6:30 pm** and the **Sedan training will be on Wednesday, April 23rd at 7:00**

Chautauqua County 4-H Spring Livestock Shows



SMALL ANIMAL SHOW

MAY 17, 2025

9:00 A.M.

BEEF SHOW

APRIL 26, 2025

11:00 A.M.



Chautauqua County Fairgrounds—Sedan, KS

Weigh-in & registration 30 minutes prior to each show

**Open only to youth in
Chautauqua & Elk Counties.**

For more information contact the Extension Office

| | |
|------------|-------|
| 9:00 a.m. | Goat |
| 10:00 a.m. | Sheep |
| 11:30 p.m. | Swine |

Concessions will be available

K-STATE
Research and Extension



Rolling Prairie
District

K-State Research and Extension is an equal opportunity provider and employer. K-State Research and Extension is committed to providing equal opportunity for participation in all programs, services and activities. Accommodations for persons with disabilities may be requested by contacting the event contact (Jerry McDanel) two weeks prior to the start of the event. You may make a request by calling 620-725-5890 or by e-mail at jmcd53@ksu.edu. Requests received after this date will be honored when it is feasible to do so. All dates and activities are subject to change.

Chautauqua County 4-H Calendar of Events 2024-2025

All dates are subject to change until finalized by 4-H Council

January

8 4-H Council – Sedan
20 Martin Luther King Jr Day—Offices Closed
17 SE Regional Project Award Screening, Fredonia
24 Citizenship in Action Registration Deadline

February

1 Enrollment Deadline for Exhibiting at the county fair
12 4-H Council – Sedan
16-17 Citizenship in Action—Topeka
22-23 Horse Panorama, Rock Springs
28 CQ County Club Day/Favorite Foods Entries Due

March

1 State 4-H Scholarship Applications Due
1 KSU Jr. Swine Producer Day—Manhattan
8 County Club Day/Favorite Foods Show — Sedan
22 KSU Jr. Meat Goat Producer Day—Manhattan
22 Regional 4-H Club Day—Madison
23 Market Beef Weigh-In—Sedan

April

1 CQ County 4-H Scholarship and Cord Applications Due
9 4-H Council
11-16 National 4-H Conference
18 Good Friday—Extension Offices Closed
25-26 Market Hog, Lamb and Goat Weigh-In – Sedan
26 Spring Beef Show

May

1 Project Drop/Add Deadline
1 State Nominations Due for Market Beef
TBA Fun Fish Clinic — Sedan
17 Spring Small Animal Livestock Show – Sedan
26 Memorial Day — Extension Offices Closed

June

June/July 4-H Camp—Rock Springs
1 Horse ID's Due
4-6 Discovery Days—Manhattan
11 4-H Council
13-15 State Geology Field Trips
15 State Nominations Due for Commercial Heifer, Swine, Sheep and Meat Goats
3 SE Area Ag Contests—Iola
12 SE Area 4-H Youth Challenge Day—Emporia
TBA KSU Animal Science Leadership Academy
18-28 Citizenship Washington Focus
28 Fairgrounds Clean Up

July

4 Independence Day – Extension Offices Closed
11 CQ County Fair Entries Due
11 Skillathon—Extension Office
11 Premium Sale Requirements Due to Office
15 Kansas State Fair Market Livestock Entries Due
16-19 Elk County 4-H Fair—Howard
19 Fashion Revue—Cedar Vale
19 Fairgrounds Clean Up – Sedan
21 CQ Horse Show—Sedan
23 CQ County Market Livestock Weigh In—Sedan
20-26CQ County Fair—Sedan

August

13 4-H Council
10-16 Inter-State Fair and Rodeo- Coffeyville
15 Kansas Junior Livestock Show Entries Due
TBA State 4-H Livestock Sweepstakes

September

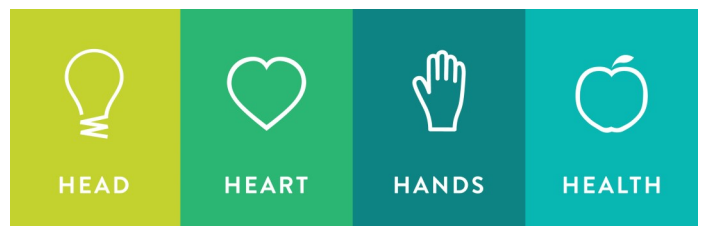
1 Labor Day-Extension Offices Closed
5-14 Kansas State Fair - Hutchinson
19 Record Books and Pin Applications Due

October

1 Beginning of New 4-H Year
3-5 Kansas Junior Livestock Show-Hutchinson
5-11 National 4-H Week
11-12 48 Hours of 4-H
8 4-H Council
18 4-H Bingo Fundraiser

November

TBA Kansas 4-H Leadership Weekend
TBA County 4-H Achievement Banquet and Supporters' Appreciation Dinner



K-State Junior MEAT GOAT PRODUCER DAY







3.22.25

Event

Join us on Saturday, March 22, 2025 for the biennial K-State Junior Meat Goat Producer Day at the Stanley Stout Center north of the K-State campus in Manhattan. This educational program will be a fun-filled day in which youth, parents, agents, ag teachers, project leaders, and volunteers can increase their knowledge of youth meat goat projects. Presentations will be provided by K-State faculty members, graduate students, former exhibitors, and guest speakers. All ages and skill levels are invited! Participants will receive a K-State Meat Goat Show Guide, t-shirt, and complimentary lunch. Only those who register by the deadline on February 26 will receive a t-shirt. The registration fee is \$20/person before February 26 and \$25/person after the deadline. This is a family event! Anyone attending must register, including all youth, parents, and adults. Registration is limited to 400 participants, filled on a first come, first serve basis.

K-State, County Extension Councils, Extension Districts, and U.S. Department of Agriculture Cooperating. All educational programs and materials available without discrimination on the basis of race, color, religion, national origin, sex, age, or disability.

Registration

-  \$20/person by February 26
-  \$25/person after February 26
-  Late registrants will not receive a t-shirt.
-  All attendees must register, including youth, parents, & adults.
-  No refunds
-  Attendance is limited to the first 400 participants to register.



Scan me!

Questions?

Lexie Hayes
adhayes@ksu.edu
785.532.1264

Tentative Program

Friday, March 21

5:00-7:00PM *Optional Tour*
Sheep & Meat Goat Center

Saturday, March 22

8:00AM Check-in

9:00AM Welcome

9:15AM Selection

10:00AM Breakout Sessions

- Nutrition
- Facilities & Equipment
- Doe Management & Kidding

11:15AM Health & Wellness

12:00PM Lunch

1:00PM Breakout Sessions

- Showmanship
- Reproduction
- Clipping & Grooming

3:15PM Wrap-up

3:30PM YQCA Training (*optional*)

4:00-6:00PM *Optional Tour*
Sheep & Meat Goat Center

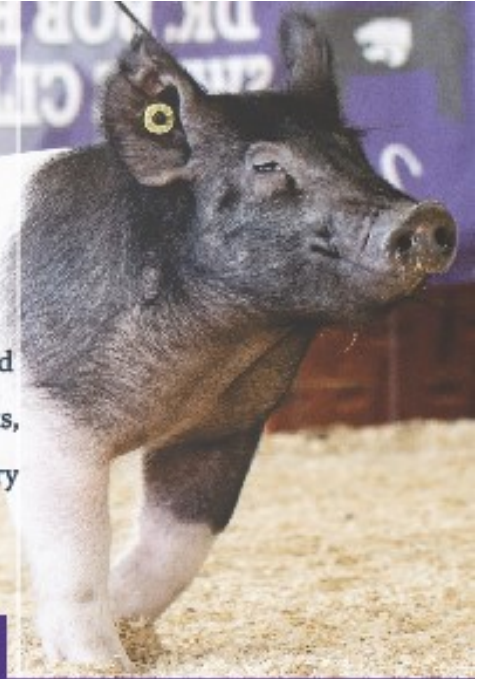
Register Online

[https://commerce.cashnet.com /
KSUASIND](https://commerce.cashnet.com/KSUASIND)

By
February 26



2025 K-State Junior Swine Producer Day



Join us on Saturday, March 1, 2025 for the biennial K-State Junior Swine Producer Day at the Stanley Stout Center in Manhattan. This educational event will be a fun-filled day in which youth, parents, agents, ag teachers, and swine project leaders can increase their knowledge of youth swine projects. Presentations will be provided by K-State faculty members, graduate students, former exhibitors, and guest speakers. All ages and skill levels are invited! Participants will receive a K-State Show Pig Guide, t-shirt, and complimentary lunch. Only those who register by February 5 will receive a t-shirt. The registration fee is \$20/person for those who sign up by the registration deadline, or \$25/person after that date. Registration is limited to 400 attendees, on a first come, first served basis. This is a family event! Anyone attending must register, including all youth and adults.

March 1



Tentative Schedule

- 8:00AM Registration Opens
- 9:00AM Welcome
- 9:15AM Project Selection
- 10:00AM Breakout Sessions
 - Nutrition, Meats, Facilities & Equipment, Breeds & Ear Notching
- 12:00PM Lunch
- 12:45PM Health
- 1:30PM Breakout Sessions
 - Showmanship, Daily Care & Clipping, Show Day Prep, Resources
- 3:00PM Wrap-up
- 3:30PM YQCA Training (optional)

Location
Stanley Stout Center



Registration

- \$20/person by February 5
- \$25/person after February 5
- Late registrants will not receive a t-shirt.
- All attendees must register, including youth, parents, and adults.
- No refunds.
- Attendance is limited to the first 400 participants to register.

Register Online
<https://commerce.cashnet.com/KSUASIND>



Questions?

Joel DeRouchey
jderouch@ksu.edu
785.532.2280

Lexie Hayes
adhayes@ksu.edu
785.532.1264

Register By

February 5

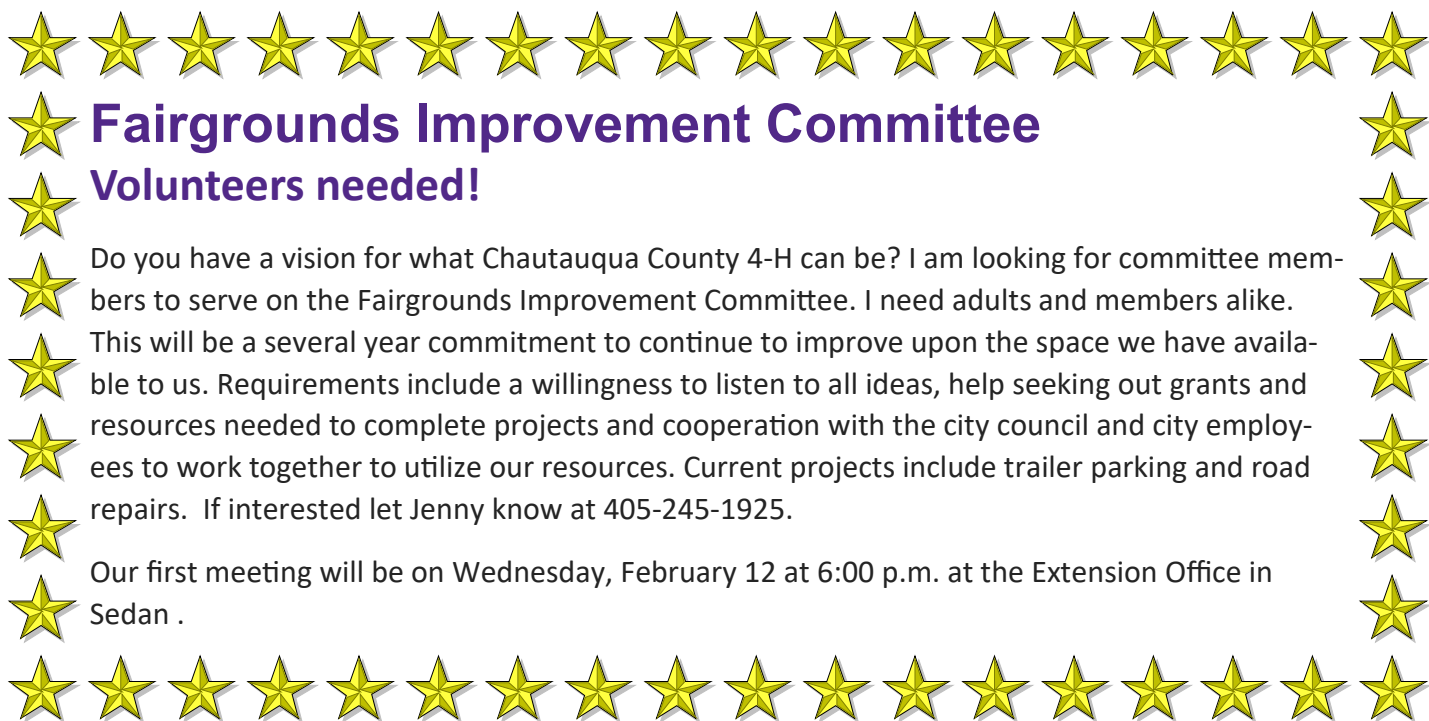
Limited Attendance



Scan Me!

K-State, County Extension Councils, Extension Districts, and U.S. Department of Agriculture Cooperating. All educational programs and materials available without discrimination on the basis of race, color, religion, national origin, sex, age, or disability.

K-State Research and Extension and the Department of Animal Sciences & Industry, or their assignees, reserve the right to photograph, record the image and/or voice of participants for future research, educational, or promotional purposes. By attending, you provide consent to the above items and waive all rights to claims for payment or royalties in connection with any use of said images or recordings, unless you notify event organizers you withhold consent, in writing, prior to the event.



Fairgrounds Improvement Committee

Volunteers needed!

Do you have a vision for what Chautauqua County 4-H can be? I am looking for committee members to serve on the Fairgrounds Improvement Committee. I need adults and members alike.

This will be a several year commitment to continue to improve upon the space we have available to us. Requirements include a willingness to listen to all ideas, help seeking out grants and resources needed to complete projects and cooperation with the city council and city employees to work together to utilize our resources. Current projects include trailer parking and road repairs. If interested let Jenny know at 405-245-1925.

Our first meeting will be on Wednesday, February 12 at 6:00 p.m. at the Extension Office in Sedan .

4-H Council News

On January 15, the 4-H Council met. They voted to change the type of banner for outdoor exhibits at the fair to a more contemporary design. Indoor banners will remain the same. We also reviewed several fair schedule changes. 4-H Council will pay for the pool on the day of the 24th for everyone to swim when it's convenient, instead of renting the pool for just the evening. Cookout will be at 5 pm on Wednesday. The Public Fashion Revue will be with the Rodeo Queen Modeling Contest at 7pm on Wednesday at the Gregg Theater. Barnyard Olympics will be held Friday afternoon.

We will need new fair superintendents for several areas. If you are interested in being a fair superintendent or helping with the fair, contact Jenny McDaniel.

Our next Council meeting will be on March 12th at 7:00 p.m. at the Sedan Extension Office.



4-H Glossary

Fair Superintendent: The volunteers that help in each division during judging during the county fair. Superintendents are adults; Jr. Superintendents are 4-H members.

Updated 4-H Horse ID Form

[Submitted by Kelsey Nordyke](#)

The Kansas 4-H Horse Identification Form has been updated and is available for https://bookstore.ksre.ksu.edu/item/horse-identification-certificate_P1039. We will only be identifying 4-H horse projects using the 4-H Horse ID Certificate. We will no longer accept registration papers to identify horses.

The following email went out to all those currently enrolled in the Horse Project:

“The [Kansas 4-H Horse ID Certificate \(P1039\)](#) has been updated for the 2025 4-H program year. Beginning with the 2025 4-H program year, please use the new form and destroy previously used 4-H Horse ID Certificates. As a reminder, to properly identify your horse, complete the 4-H Horse ID Certificate, have your Extension Agent sign it and copy it. A COPY of the Horse ID Certificate is kept on file in the Extension Office and the 4-H Horse member maintains the ORIGINAL certificate. The original certificate is presented by the 4-H member to show staff for check-in at the local 4-H horse shows. Beginning in 2025, registration papers WILL NOT be accepted to identify horses for the 4-H Horse project. An [example of the Horse ID Certificate](#) is available online (see below).

Additionally, the 4-H Horse Show Rulebook (S133) has been revised. It is available online (see below) or in the Extension Office. This will not affect any deadlines within the 4-H Horse project. Supplemental educational materials will also be released throughout the year to assist 4-H members, leaders and Extension staff with the 4-H Horse program.”

Example of completed form: <https://www.kansas4-h.org/projects/animal-science/horse/docs/SampleHorseID.pdf>

Revised 4-H Horse Show Rule Book: https://bookstore.ksre.ksu.edu/pubs/kansas-4-h-horse-show-rulebook_S133.pdf

Attention ALL Horse Project Members!!
BIG CHANGE from the State!



KSU Horse Panorama

The KSU Horse Panorama is an annual event for Kansas 4-H members ages 9–18 that features a variety of horse-related contests, demonstrations, and project talks:

Contests: Quiz bowl, hippology, public speaking, photography, and educational posters

Horse Bowl: A competitive contest that helps young people develop knowledge of equine-related topics

Demonstrations and project talks: Educational opportunities for participants

The 2025 KSU Horse Panorama will take place on February 22-23. More information about the Panorama and registration is coming soon.

The KSU Horse Panorama is a chance for Kansas youth to showcase their knowledge and skills about horses.

Get a group together and start studying all things equine!

Welcoming New 4-H Members

4-H clubs need to develop a plan to welcome and support new members when they become interested in 4-H youth development, arrive at their first 4-H club meeting, and learn about different project areas. Making a great first impression is important because it is the first step in the essential element of creating a sense of belonging. Essential Element — Belonging Youth need to know they are cared about by others and feel a sense of connection to others in the group. As the 4-H Club, it is important to provide youth the opportunity to feel physically and emotionally safe while actively participating in your group. A club should create an environment that supports and encourages its members.

Suggestions for how to cultivate a sense of belonging:

- ⇒ Identify a specific person to be the greeter at each 4-H meeting to welcome everyone attending.
- ⇒ All officers should be prepared to engage with members, guests, and adults before the start of the meeting.
- ⇒ During the meeting, use discussion questions that encourage youth to learn from each other, synthesize, and use ideas collaboratively.
- ⇒ Use discussion questions during role call (consider being sensitive towards different dimensions of diversity for new members such as socio-economic status, religion, disability status, inclusive family systems, language, etc.).
- ⇒ Organize an opening recreational activity or serve refreshments before beginning club business.
- ⇒ As new activities arise (i.e. Spring Show, Club Day, County Fair, etc.) make sure the new members and their parents are aware of what needs to be done and any deadlines that need to be met.
- ⇒ Keep the lines of communication open, so that the new family feels comfortable asking questions. 4-H seems to have a language of its own and may need to be interpreted for the new family.
- ⇒ Don't assume that someone else has already told them. Ask them, "Have you already...." or "Do you know how to....."

The Down and Dirty on Z-Books

What are ZBooks used for?

- ZBooks allows 4-H members to record their project and club work
- ZBooks helps 4-H members reflect on their work and measure their growth
- ZBooks teaches 4-H members record management skills

What can 4-H members record in ZBooks?

- Project goals
- Project presentations
- Project learning experiences
- Project exhibits
- Project leadership experiences
- Project citizenship
- Project financial journal
- Project reflection
- Photos

Where can I find resources for ZBooks?

- The Kansas 4-H Record Keeping with ZBooks page has tutorials, step-by-step guides, and information
- The [Kansas 4-H website](#) has resources for local record keeping and project report forms



Welcome 2024-2025 New 4-H Members!

For member spotlight we would like to welcome all our new 4-H families and members. Everyone please welcome them! If you have any questions or need clarification on anything please feel free to contact the 4-H Extension Office. To keep up to date with events and changes please make sure you like our Chautauqua County 4-H Facebook Group.

New Families:

Baldock – Rhett
Bowker – Brenton
Branstetter – Alex, Danny, Lexi, Mila
Mashburn – Cooper, Jourdyn, Mckinlee
Mills – Laura
Pontious – Elam*
Smith – Rebel & Raquel
Wolfe – Josiah, Jesse, Brier, Zack
Whaley – Korianne, Temperance
Zargoza – Xavier
Goode – Brant
McClure – Easton

New Members:

Alissa McDaniel
Adeline Sproul
Adalynn Stone
Violet Robinson*
Walker Stong*

*Cloverbuds

Chautauqua County Youth Entrepreneurship Challenge

February 27, 2025 ~ 10:00 AM
SHS Vocational Building

First Place \$750
Second Place \$500
Third Place \$250
People's Choice \$100





Rolling Prairie Extension District #8,
Chautauqua and Elk Counties
215 N. Chautauqua
Sedan, KS 67361

Rolling Prairie Extension District on Facebook



“Like” our Facebook page to get the most up-to-date information and news about the happenings of Rolling Prairie District! Visit <https://www.facebook.com/rollingprairieextension/> to like our page.

"K-State Research and Extension is committed to providing equal opportunity for participation in all programs, services and activities. Program information may be available in languages other than English. Language access requests and reasonable accommodations for persons with disabilities, including alternative means of communication (e.g., Braille, large print, audio tape, and American Sign Language) may be requested by contacting the event contact (insert name) four weeks prior to the start of the event (insert deadline date) at (insert phone number and email). Requests received after this date will be honored when it is feasible to do so. Language access services, such as interpretation or translation of vital information, will be provided free of charge to limited English proficient individuals upon request." (Note new language as of July 2024.)

*Knowledge
for Life*